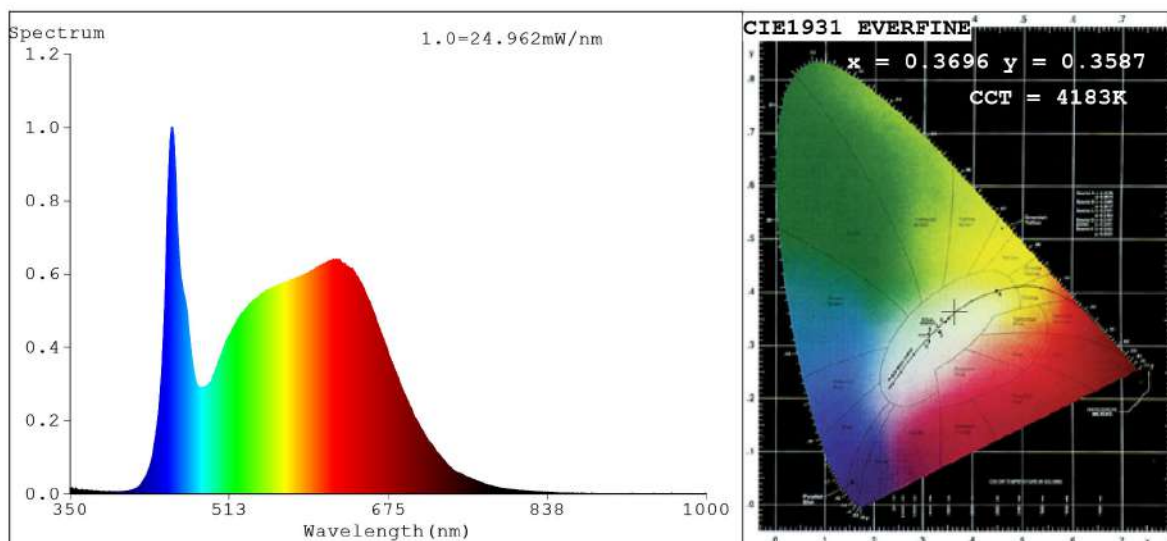


Spectrum Test Report



Color Parameters:

Chromaticity Coordinate: $x=0.3696$ $y=0.3587$ $u'=0.2252$ $v'=0.4917$

$CCT=4183K$ ($Duv=-0.0054$) Dominant WL: $Ld = 582.5nm$ Purity=18.5%

Ratio: R=19.9% G=75.4% B=4.7%; Peak WL: $Lp=454.3nm$ FWHM=23.0nm

Render Index: $Ra=95.1$ CRI=92.9 TM30: $Rf=90$ $Rg=101$

R1 =97 R2 =98 R3 =96 R4 =94 R5 =95 R6 =93 R7 =95

R8 =93 R9 =85 R10=95 R11=93 R12=69 R13=99 R14=98 R15=97

Photo Parameters:

Flux = 986.4 lm Eff. : 72.74 lm/W $Fe = 3.556 W$

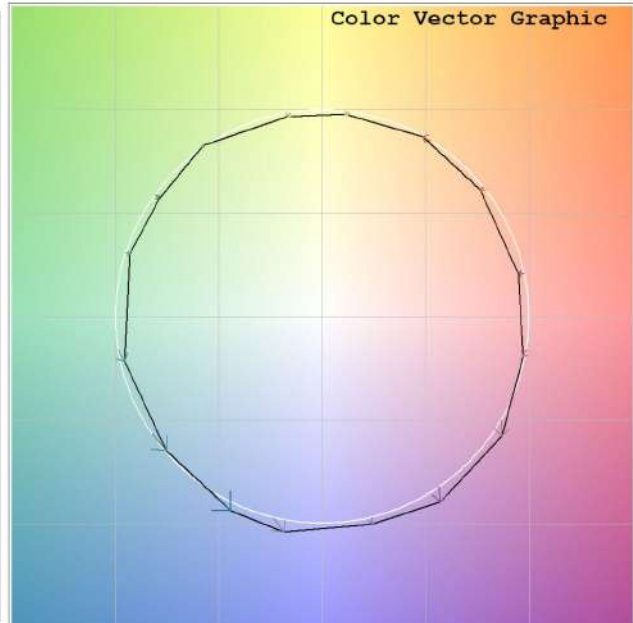
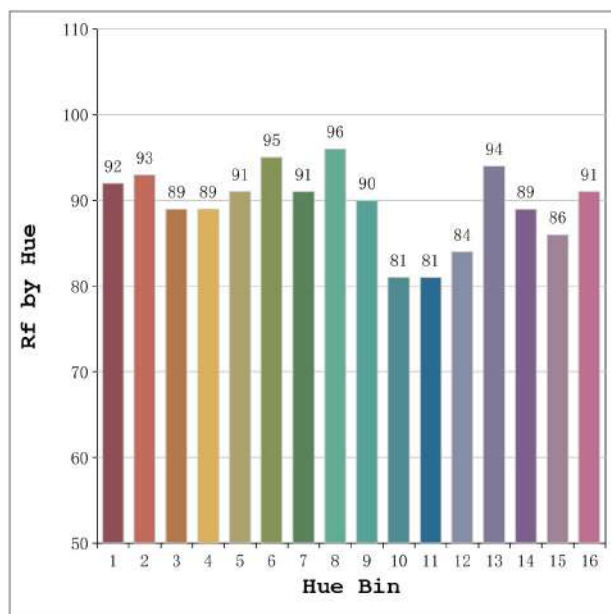
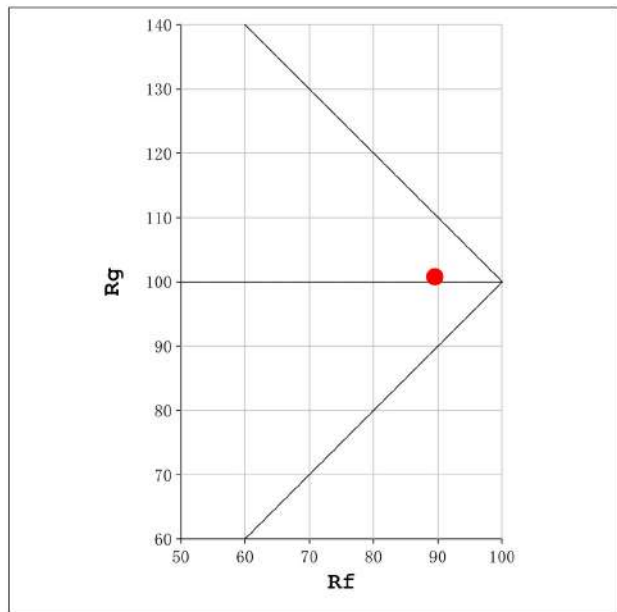
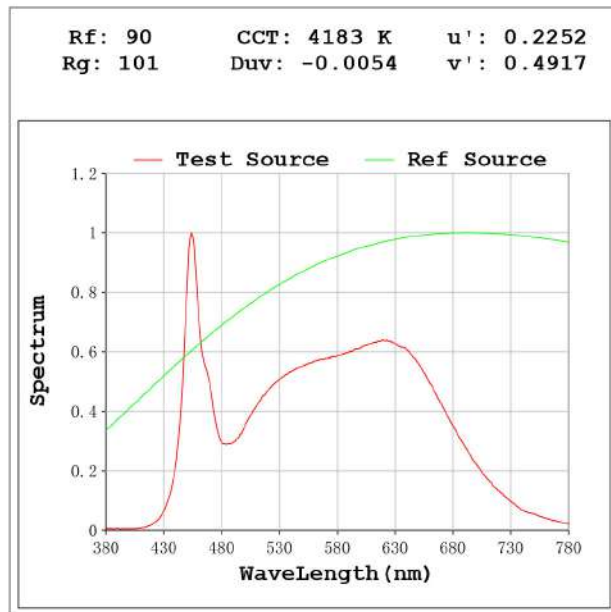
Electrical parameters:

$V = 23.998 V$ $I = 0.5651 A$ $P = 13.56 W$ PF = 1.000

Status: Integral T = 1375 ms $I_p = 46308 (71\%)$

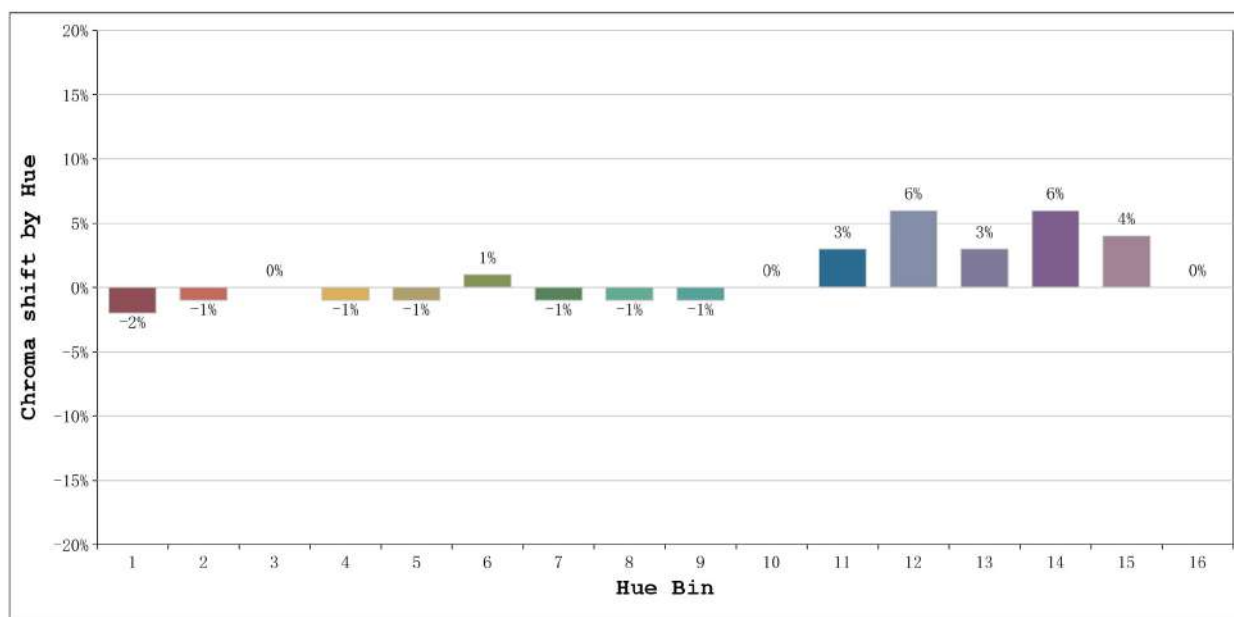
Model: Ecoled Neon 360 4000k
 Tester: Sergio Carneros
 Temperature: 23Deg
 Manufacturer: Luz Negra S.L

Number: 10.225
 Date: 2024-09-25 13:01:16
 Humidity: 51%
 Remarks: 100cm de neon



Model:Ecoled Neon 360 4000k
 Tester:Sergio Carneros
 Temperature:23Deg
 Manufacturer:Luz Negra S.L

Number: 10.225
 Date:2024-09-25 13:01:16
 Humidity:51%
 Remarks:100cm de neon



			Graphic shift(%)	
Hue Bin	Hue Angle	Rf	Chroma	Hue
1	0.0° - 22.5°	92	-2	1
2	22.5° - 45.0°	93	-1	2
3	45.0° - 67.5°	89	0	5
4	67.5° - 90.0°	89	-1	2
5	90.0° - 112.5°	91	-1	2
6	112.5° - 135.0°	95	1	0
7	135.0° - 157.5°	91	-1	1
8	157.5° - 180.0°	96	-1	0
9	180.0° - 202.5°	90	-1	6
10	202.5° - 225.0°	81	0	10
11	225.0° - 247.5°	81	3	13
12	247.5° - 270.0°	84	6	6
13	270.0° - 292.5°	94	3	0
14	292.5° - 315.0°	89	6	-3
15	315.0° - 337.5°	86	4	-5
16	337.5° - 360.0°	91	0	-2

Model:Ecoled Neon 360 4000k
 Tester:Sergio Carneros
 Temperature:23Deg
 Manufacturer:Luz Negra S.L

Number: 10.225
 Date:2024-09-25 13:01:16
 Humidity:51%
 Remarks:100cm de neon